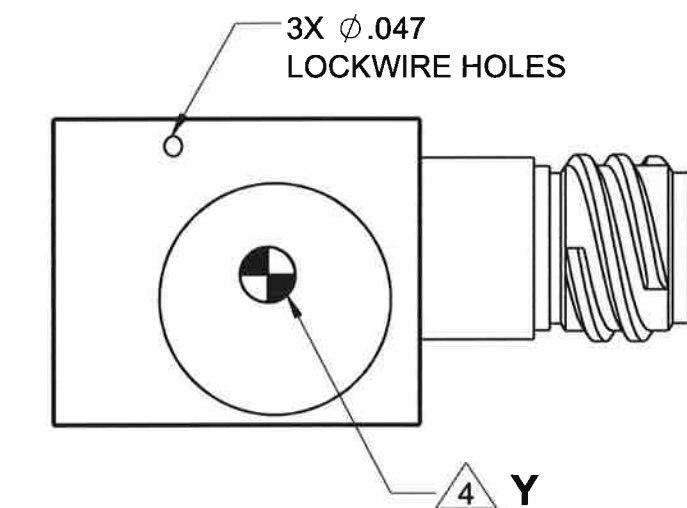
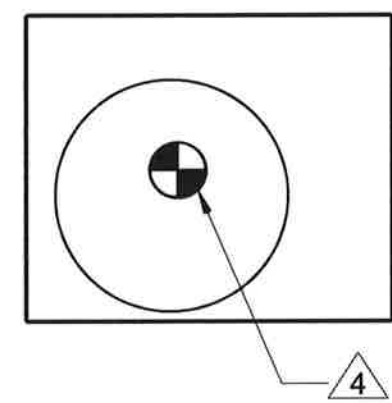
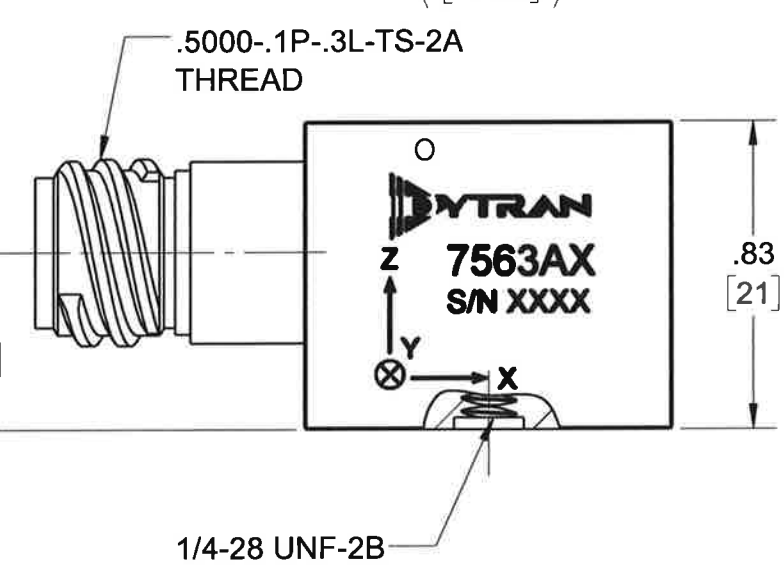
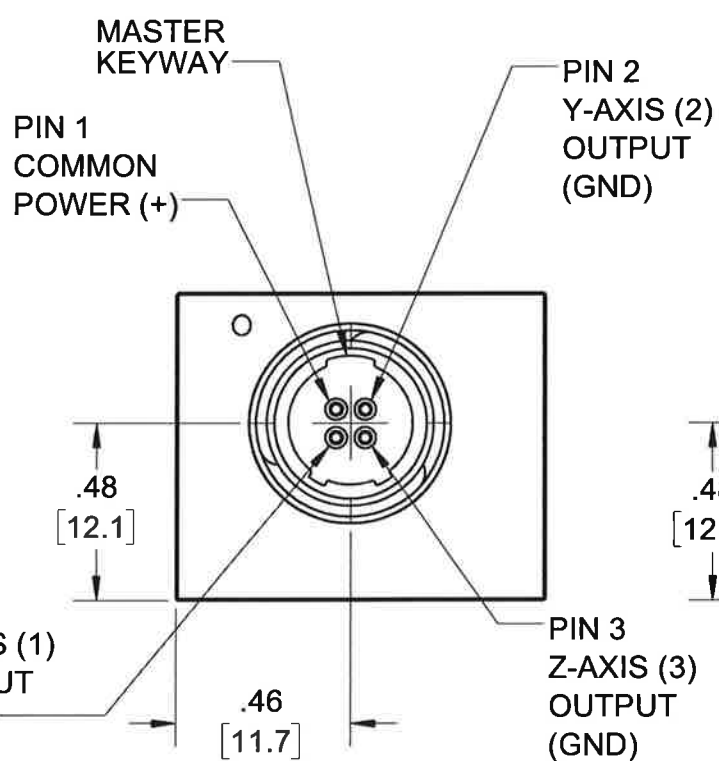
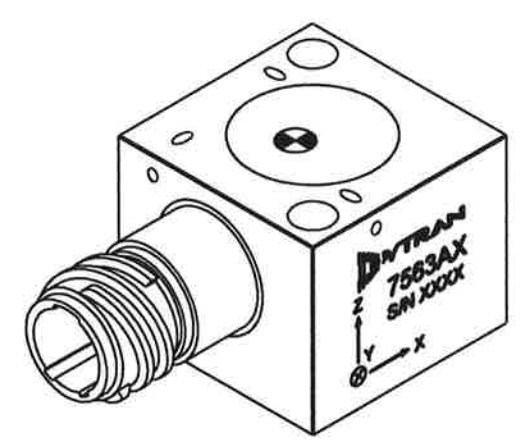
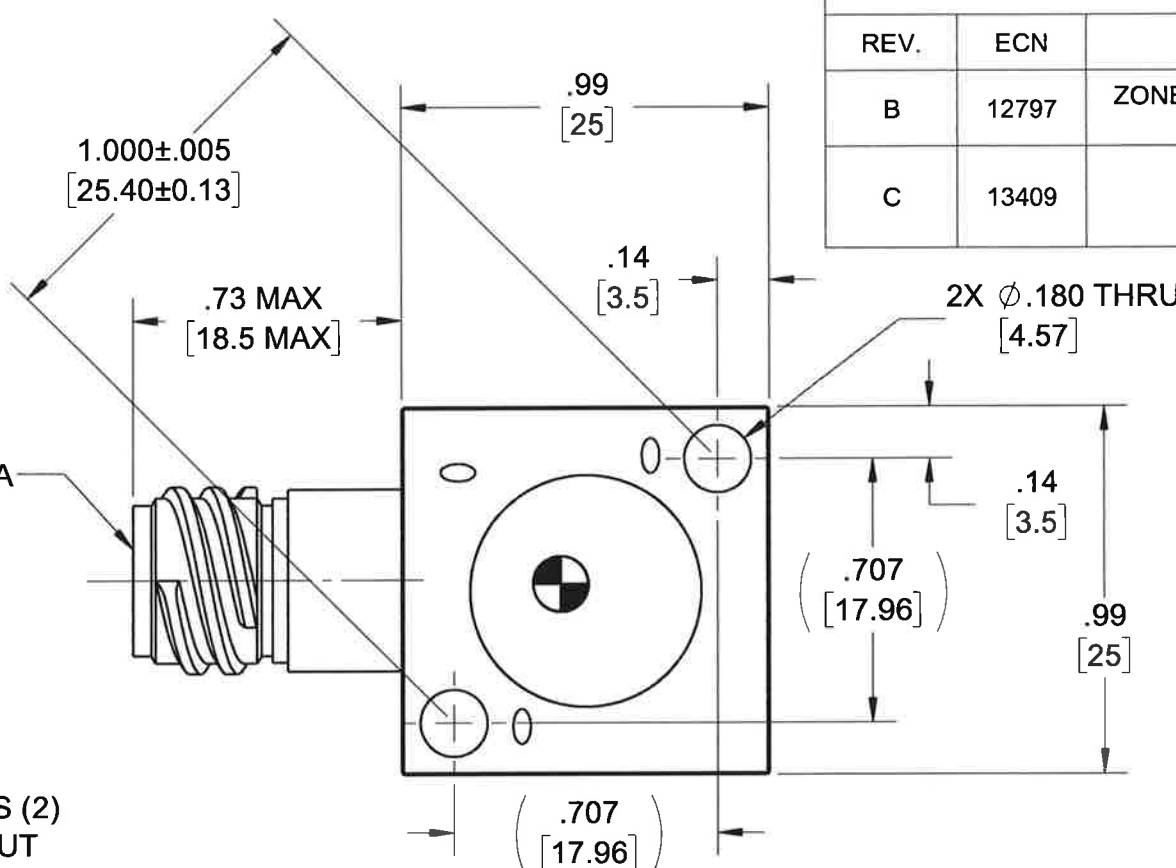


PROPRIETARY AND CONFIDENTIAL

THE INFORMATION CONTAINED IN THIS DRAWING IS THE SOLE PROPERTY OF DYTRAN INSTRUMENTS INC. ANY REPRODUCTION IN PART OR AS A WHOLE WITHOUT THE WRITTEN PERMISSION OF DYTRAN INSTRUMENTS INC. IS PROHIBITED

MODEL	INPUT RANGE
7563A1	±2g
7563A2	±50g
7563A3	±100g
7563A4	±400g

REVISIONS					
REV.	ECN	DESCRIPTION	BY/DATE	CHK	APPR
B	12797	ZONE 2C: 2X Ø.180 THRU WAS: 2X Ø.195 THRU ZONE 3D: 1.000±.005 WAS: 1.00	LN 07/05/16	DV	AS
C	13409	SEE ECN	EP 04/07/17	MH	AS



- 5. MINOR VOIDS, SCARS, SCRATCHES AND MOUNTING BLEMISH/WITNESS MARKS ON EXTERIOR SURFACES ARE ALLOWED DUE TO RESTRAINING AND HANDLING DURING TESTING, TRANSPORT OR PROCESSING. THESE APPEAR AS INDICATORS THAT DO NOT AFFECT FORM, FIT OR FUNCTION AS INTENDED BY DESIGN OR APPLICATION
 - 4 MARKING DENOTES LOCATION OF SENSING ELEMENT'S CENTER OF MASS
 - 3 MATES WITH GLENAIR P/N: 805-001-16Z1 8-4SA AND 805-002-16Z1 8-4SA
 - 2. WEIGHT: 85 GRAMS, MAX.
 - 1. MATERIAL: 300 SERIES STAINLESS STEEL
- NOTES: UNLESS OTHERWISE SPECIFIED

UNLESS OTHERWISE SPECIFIED: INTERPRET DIM & TOL PER ASME Y14.5M - 1994. REMOVE BURRS. COUNTERSINK INTERNAL THDS 90° TO MAJOR DIA. CHAM EXT THDS 45° TO MINOR DIA. THD LENGTHS AND DEPTHS ARE FOR MIN FULL THDS. DIMENSIONS APPLY AFTER FINISHING.

ALL MACHINED SURFACES. TOTAL RUNOUT WITHIN .005. BREAK SHARP EDGES .005 TO .010. MACHINED FILLET RADII .005 TO .015. WELDING SYMBOLS PER AWS A2.4. ABBREVIATIONS PER MIL-STD-12.

DECIMALS .XX ±.03 .XXX ±.010		METRIC .X ±0.8 .XX ±0.25		ANGLES ±1°
APPROVALS		DATE		
ORIG	LN	09/29/15		
CHK	EP	06/28/16		
APP	DV	06/28/16		
DO NOT SCALE DRAWING		THIRD ANGLE PROJECTION USA		

UNLESS OTHERWISE SPECIFIED: DIMENSIONS ARE IN INCHES. DIMENSIONS IN BRACKETS [] ARE IN MILLIMETERS. TOLERANCES ARE:

DYTRAN INSTRUMENTS, INC. Chatsworth, CA

MASTER ONLY IF IN RED

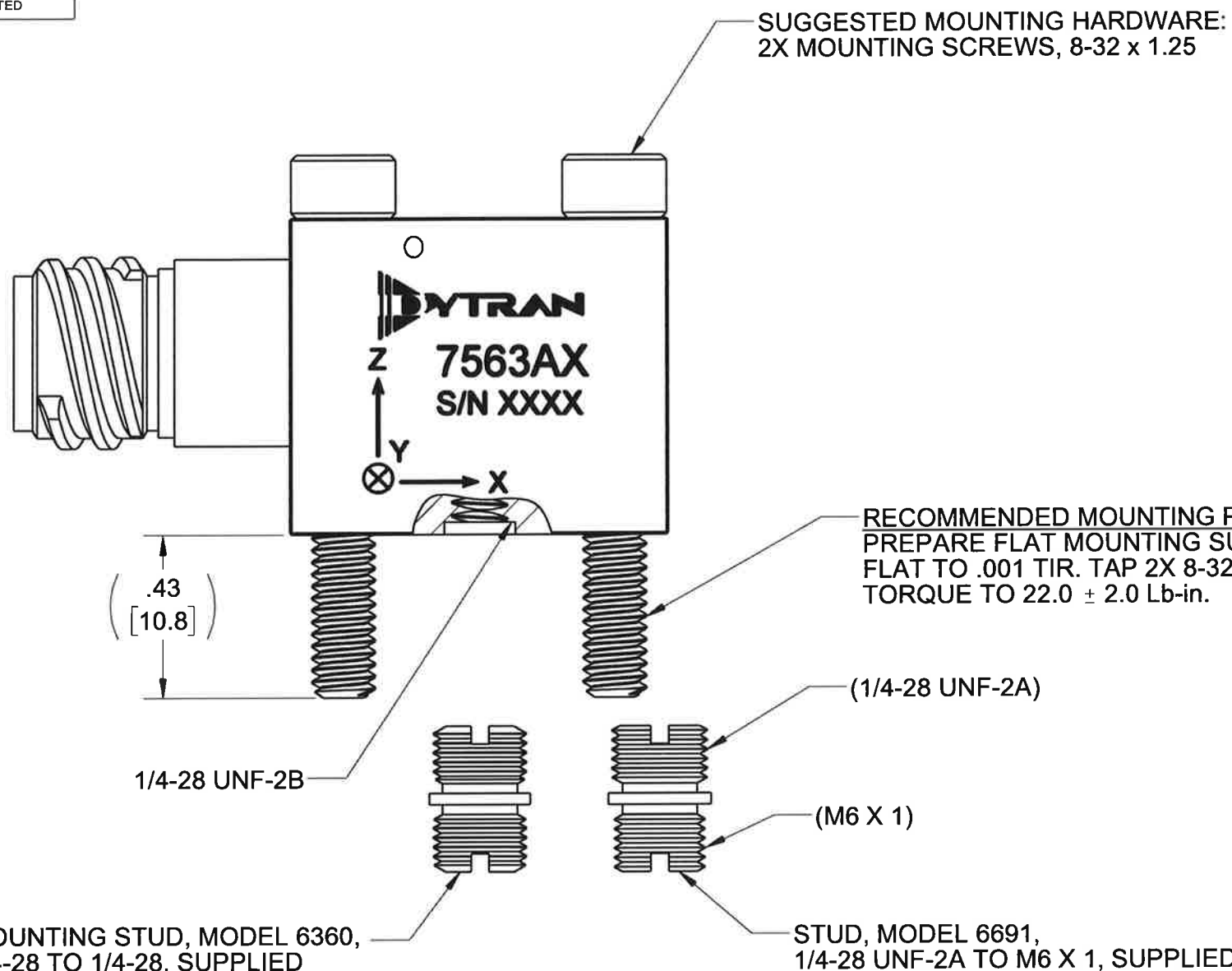
TITLE: **OUTLINE/INSTALLATION DWG, TRIAXIAL CVLD ACCEL, 7563A SERIES**

SIZE	CAGE CODE	DWG NO	REV
B	2W033	127-7563A1	C

SCALE: 2:1 SHEET 1 OF 2

PROPRIETARY AND CONFIDENTIAL

THE INFORMATION CONTAINED IN THIS DRAWING IS THE SOLE PROPERTY OF DYTRAN INSTRUMENTS INC. ANY REPRODUCTION IN PART OR AS A WHOLE WITHOUT THE WRITTEN PERMISSION OF DYTRAN INSTRUMENTS INC. IS PROHIBITED



SUGGESTED MOUNTING HARDWARE:
2X MOUNTING SCREWS, 8-32 x 1.25

RECOMMENDED MOUNTING PREPARATION:
PREPARE FLAT MOUNTING SURFACE, 1.05 [26.7] x 1.05 [26.7] MIN,
FLAT TO .001 TIR. TAP 2X 8-32 UNF-2B ∇ .30 [7.6] MIN.
TORQUE TO 22.0 \pm 2.0 Lb-in.

.43
[10.8]

1/4-28 UNF-2B

(1/4-28 UNF-2A)

(M6 X 1)

MOUNTING STUD, MODEL 6360,
1/4-28 TO 1/4-28, SUPPLIED

STUD, MODEL 6691,
1/4-28 UNF-2A TO M6 X 1, SUPPLIED

RECOMMENDED MOUNTING PREPARATION:
PREPARE FLAT MOUNTING SURFACE, 1.00 [25.4] x 1.00 [25.4] MIN,
FLAT TO .001 TIR. TAP 1/4-28 UNF-2B ∇ .200 [5.1] MIN.
TORQUE TO 12-15 Lb-in.

RECOMMENDED MOUNTING PREPARATION:
PREPARE FLAT MOUNTING SURFACE, 1.00 [25.4] x 1.00 [25.4] MIN,
FLAT TO .001 TIR. TAP M6 X 1 ∇ .200 [5.1] MIN.
TORQUE TO 12-15 Lb-in.

MASTER ONLY IF IN RED

DYTRAN
INSTRUMENTS, INC. Chatsworth, CA

TITLE: **OUTLINE/INSTALLATION DWG,
TRIAxIAL CVLD ACCEL, 7563A
SERIES**

SIZE B	CAGE CODE 2W033	DWG NO 127-7563A1	REV C
SCALE: 2:1		SHEET 2 OF 2	

Model Number 7563A1	PERFORMANCE SPECIFICATIONS			DOC NO PS7563A1
	VARIABLE CAPACITANCE TRIAXIAL ACCELEROMETER			REV C, ECN 13409, 04/07/17



- VARIABLE CAPACITANCE ACCELEROMETER
- CURRENT OUTPUT
- HERMETICALLY SEALED
- DC RESPONSE
- 4-20 mA LOOP COMPATIBLE

PHYSICAL

Weight, Max	Type	3.0	oz	85	grams
Connector [1]	Thru Holes	Receptacle, 4-pin		Receptacle, 4-pin	
Mounting	Tapped hole	2 X Ø.180"		2 X Ø 4.57mm	
Material		1/4-28 UNF-2B		1/4-28 UNF-2B	
		300 Series S.S.		300 Series S.S.	

PERFORMANCE

Input Range	±2	g	±19.6	m/s ²
Frequency Response (-3dB), ± 50Hz	0-400	Hz	0-400	Hz
Sensitivity Differential, ±10%	2,500	µA/g	255	µA/m/s ²
Output Noise, Differential, Typ	5	µ g rms/v Hz	49	µ m/s ² /v Hz
Non-Linearity, Max [2]	0.5	% F.S	0.5	% F.S
Transverse Sensitivity, Max	4	%	4	%
Scale Factor Calibration Error, Max	2	%	2	%

ENVIRONMENTAL

Maximum Mechanical Shock	2000	gpk	19620	m/s ² peak
Bias Temperature Shift ,Max [3]	111	(ppm of span)/°F	200	(ppm of span)/°C
Bias Calibration Error	1.5	% of span	1.5	% of span
Operating Temperature Range	-55 to +257	°F	-48 to +125	°C
Scale Factor Temperature Shift [3]	-111 to 0	ppm/°F	-200 to 0	ppm/°C
Seal	Hermetic		Hermetic	

ELECTRICAL

Bias Current	14-15	mA	14-15	mA
Output Impedance, Nom	400	Ω	400	Ω
Operating Voltage	10-36	VDC	10-36	VDC
Operating Voltage Rise Time	< 2	ms	< 2	ms
Full Scale Output	±5	mA	±5	mA
Power Supply Rejection Ratio	>65	dB	>65	dB

This family also includes:

Model	Input Range (g)	Frequency response (Hz)	Sensitivity Differential, ±10% (µA/g)	Max.Shock (gpk)	Noise Differential (µg rms/vHz)
7563A2	± 50	0-2000	100	5000	50
7563A3	± 100	0-2500	50	5000	100
7563A4	± 400	0-2500	12.5	5000	400

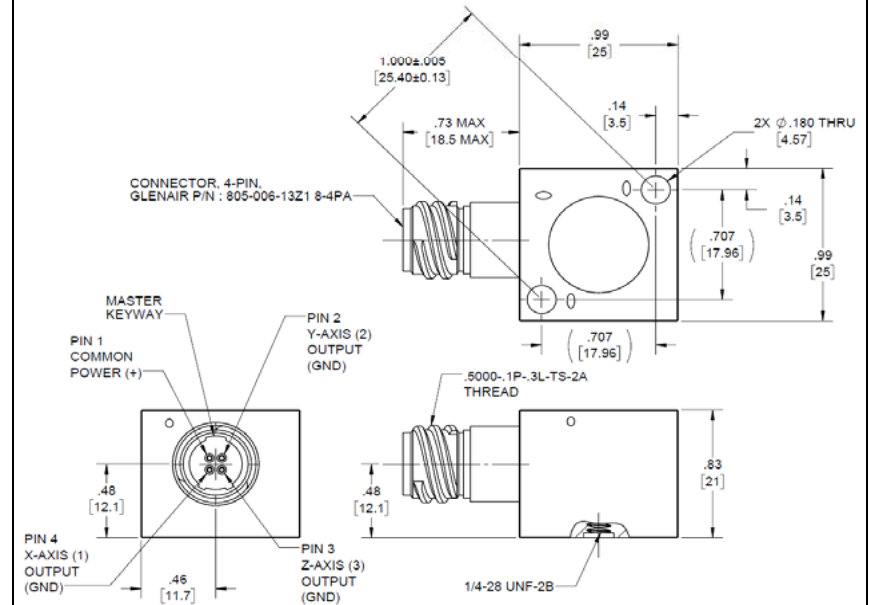
Refer to the performance specifications of the products in this family for detailed description.

Supplied Accessories:

- 1) Accredited calibration certificate (ISO 17025)
- 2) Model 6360 mounting stud, 1/4-28 to 1/4-28 . Qty. 1
- 3) Model 6691 mounting stud, 1/4-28 to M6x1 . Qty. 1

Notes:

- [1] Glenair P/N 805-006-13Z1 8-4PA. Mates with 805-001-16Z1 8-4SA and 805-002-16Z1 8-4SA
- [2] -90% to +90% of Full Scale.
- [3] Over the rated temperature range.



Units on the line drawing are in inches, dimensions in brackets [] are in millimeters. Refer to 127-7563A1 for more information.



21592 Marilla Street, Chatsworth, California 91311 Phone: 818.700.7818 Fax:818.700.7880 www.dytran.com
For permission to reprint this content, please contact info@dytran.com